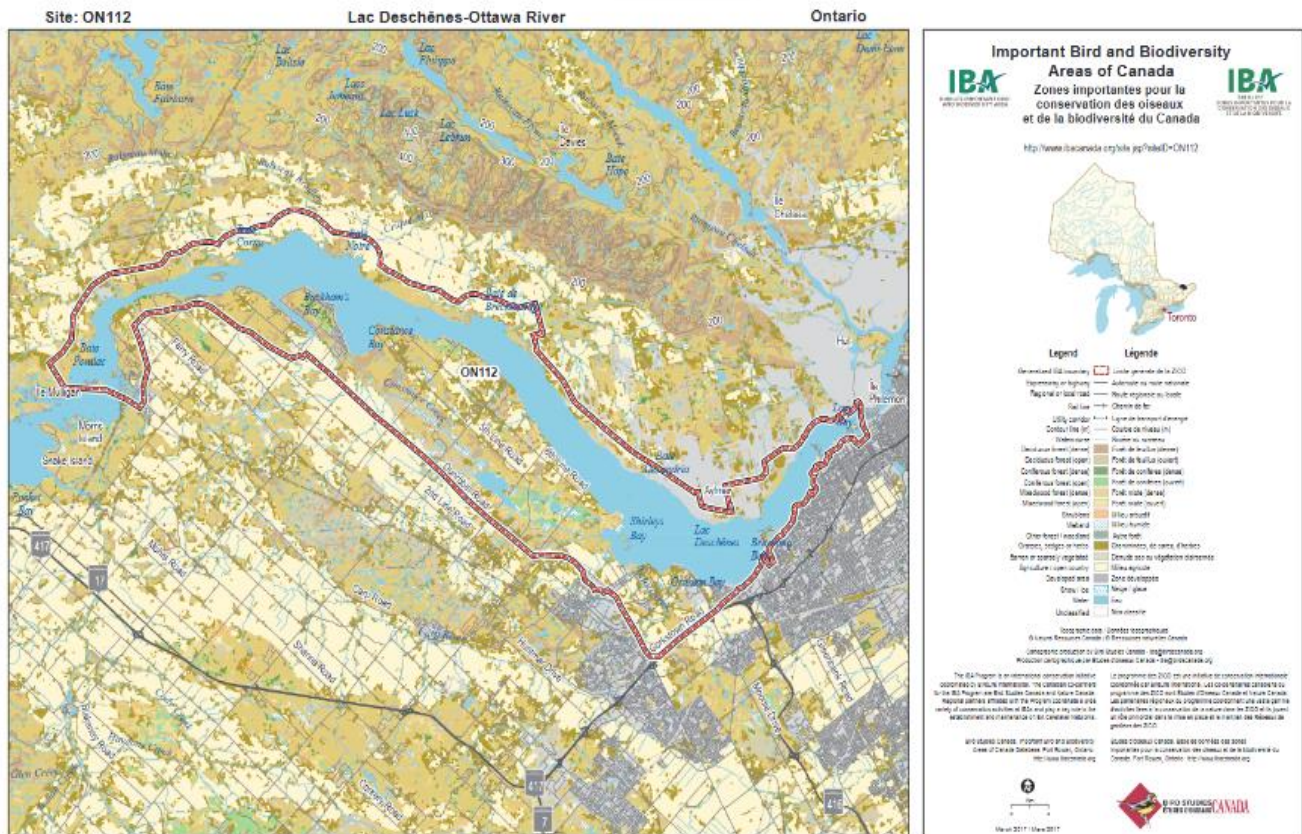


Important Bird Area – A Globally Significant Area



The IBA Program is an international conservation initiative coordinated by BirdLife International. The Canadian co-partners for the IBA Program are Birds Canada and Nature Canada. : <https://www.ibacanada.org/site.jsp?siteID=ON112>

The Lac Deschênes-Ottawa River IBA...includes a core area of approximately 45 kilometres of the Ottawa River from the Chaudière dam in the east to the Sault-des-Chats Dam near Fitzroy Harbour to the west which covers several key areas where waterbirds congregate.

The riparian forests adjacent to the river teem with migrating landbirds during spring and fall migration.

Conservation Issues

In 2014, the Lac Deschênes-Ottawa River Important Bird Area Conservation Plan was published in support of the IBA. The planning process identified a large number of threats to the habitats within the IBA and individual species. These threats are mainly associated with the large and growing urban areas and their populations. They include various forms of pollution, disturbance, building encroachment and other human-associated causes of avian mortality such as domestic cats.

Contaminants from both urban applications and agriculture could undermine invertebrate life in the river and lower its high productivity that makes it so attractive to aerial insectivores.

Protecting ecosystems also protects human health.