

CHAMPLAIN SPEAKER



<https://champlainpark.org/>



Jan 25 AGM — news, links, elections

On Zoom: https://us02web.zoom.us/webinar/register/WN_AI94bR2nQl6Bpys7wsTcCw

The annual general meeting of the Champlain Park Community Association is scheduled for **Thursday, Jan. 25.**

It will be a hybrid event, live in the fieldhouse **from 7 p.m. to 9 p.m.**, but with a virtual link (above) for those who want to take part off-site.

(After registering online, you will receive an email with information about joining the meeting. If you are attending at the fieldhouse, register when you arrive.)

This is a legally-required meeting for the association and a great way to catch up on the year's activities.

The meeting will follow a familiar format, with business reports from the various committees and the election of officers.

Kitchissippi Coun. Jeff Leiper is slated to be our guest speaker and will provide updates on important zoning/planning changes — from the province and city — that may affect every street in Champlain Park.



Coun. Jeff Leiper

Volunteering on the board is a great way to contribute to our neighbourhood, connect with neighbours and, who knows, have a little fun!

If you'd like to vote on matters at the meeting, please remember to buy a membership. There are detailed instructions on our website, including how to e-transfer the \$20 annual fee.



Want on board?
Become a member,
Run for office

The board, which makes decisions collectively, is composed of these positions, some of which are vacant.

Directors:

1. Chair of Finance/ Membership/Risk Management
2. Chair of Meetings
3. Chair of Communications
4. Chair of Planning, Zoning, Environment issues
5. Secretary
6. Environment coordinator
7. Social coordinator
8. Fieldhouse coordinator
9. Member at large
10. Member at large
11. Member at large

The Agenda

Chair: Nick Xenos

Guest Speaker: Jeff Leiper, Councillor and Planning and Housing Committee Chair.

Planning and Zoning Report — Chair Heather Pearl.

Financial Report from CPCA Finance Committee — Lynne Bankier.

Election of Board for 2024 — Nick Xenos.

Business Items

1. Approval of minutes of previous AGM - Liz Gyalokay.
2. Reports from the 2022/23 Board:
 - a. Environment and Kichi Sibi Winter Trail — Kris Phillips.
 - b. Award of certificates to recognize work on the environment — Heather Pearl
 - c. Communications — Laurie Fagan
 - d. Social — Nick Xenos
 - e. Fieldhouse Update — Laurie Fagan
 - f. Civic engagement — Richard L.
3. Other Business
4. Adjournment

Election process:

- * Anyone can run for any position. Best to email champlainpark@gmail.com beforehand.
- * Names can also be put forward at the AGM.
- * If more than one person puts their name forward, an election would take place for that position (each candidate would have two minutes to present.)
- * Candidates and any voter needs to be a member. To join, see <https://champlainpark.org/>

Winter carnival set for Saturday Jan 20, at park/fieldhouse

A last reminder about our annual Winter Carnival. Here's a quick peek at the agenda.

1 p.m. to 3 p.m. — Horse-drawn sleigh rides and outdoor games in the park.

1:30 p.m. to 3 p.m. — Music in the fieldhouse with locally based Jazz Quartet.

Admission, sleigh rides, hot chocolate and coffee are **FREE**.

Food and Beverages — There will be a Chili Cookoff, baked goodies, juice, hotdogs and more for sale in the fieldhouse kitchen. Please bring a little cash. Debit/credit machines are **NOT** available.

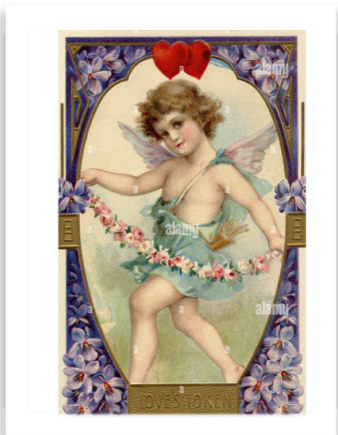


To help with setup and cleanup, lunch counter, ticket sales, and donations of baked goods, please contact Erin and Kelly for more info at erintopping@hotmail.com or 613-799-1770.

The Kichi Sibi Winter Trail team will be out for the fun. For more info about trail conditions, check out www.wintertrail.ca

As an indoor event, organizers urge everyone to follow public health guidelines. As for the rink, weather conditions and sufficient prep time will determine whether things are operating normally.

Vintage and Valentine's Sale, Saturday Feb 10

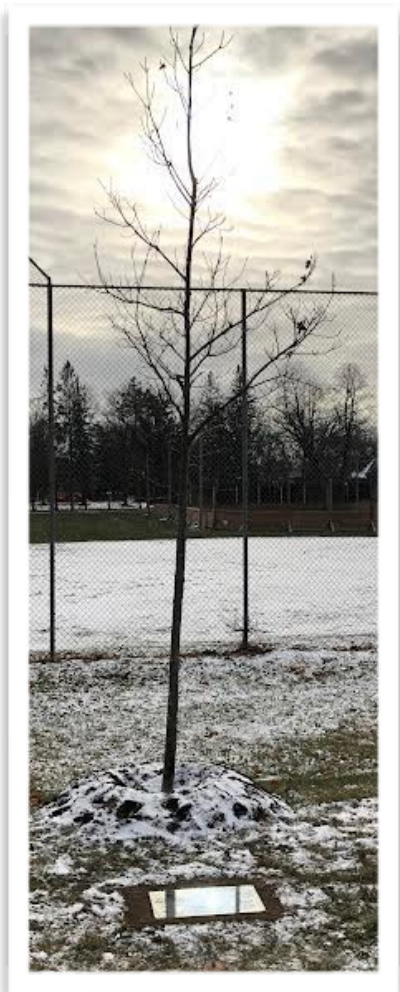


We invite everyone to a Vintage/ Valentine's sale in the fieldhouse, just in advance of the annual sweetheart celebration. Expect to see vintage clothing, handbags, cashmere scarves, jewelry, antiques and chocolates. There will be tea/milk and delicious cakes.

WHERE: Champlain Park Fieldhouse
WHEN: 10 a.m. till 3 p.m.



A tree grows in memory of our Amy Steele (Kempster)



On Dec. 17, about 50 people attended a dedication to honour Amy Steele (Kempster), a longtime leader and resident of Champlain Park.

Amy made enormous contributions to our community and, more broadly, to the city as a whole. Not only a past chair of our community association, she was also chair of the Greenspace Alliance and received a lifetime achievement award from the Federation of Citizens' Associations of Ottawa. Leaders of those groups paid tribute to Amy at an outdoor event by her tree, a red oak marked with a plaque.

She also earned the Mayor's Award for volunteer service.

Amy was a longtime columnist in the Champlain Speaker and the card shark behind a weekly bridge club that met in the fieldhouse.

Our Heather Pearl may have put it best. "Amy's tree, its branches and roots spreading to embrace and link an urban park to a burgeoning forest: I believe Amy would be pleased."

She is missed.



Our Job Matchmaker site is hiring!

Our Job Matchmaker service is now up and running. This is a great way to connect those available for casual work with a resident who needs occasional help.

For instance, Lou, 343-553-9350, has a truck and snowblower and can be hired for snow-clearing and small moves. Mia, who is Red Cross trained, 613-853-9419 (also text) can do babysitting and dog walking. ER, at MatchMakerCPCA@gmail.com, can do babysitting, shovelling, gardening and raking. For newcomers, there is a form to fill out and a screening step for privacy. Please consult <https://champlainpark.org/matchmaker/> for the details on how to match a worker with an employer.

Rink update...fingers crossed

Hey Everyone!

If the weather cooperates, there will soon be skating at Champlain Park. Once it's open, the fieldhouse changerooms will also be available during supervised rink hours for warming up, skate changing, washroom use, and access to the first-aid kit. Rink supervisors oversee the use of the changerooms and the rink during these hours. **We always need more rink supervisors to make the skating season a success!** Supervisors must be 14 years or older. Students can also count the hours towards your high school volunteer requirement.

Sign-up is easy with our Google form: <https://forms.gle/9sgp7DAGw4mysaKi7>

Contact us at ChamplainParkRink@gmail.com if you have any questions.