



CHAMPLAIN SPEAKER

OCT.
2010

HALLOWEEN PARTY SET FOR OCTOBER 29

Date: Friday, October 29

Time: 6–8 p.m.

Place: Champlain Park fieldhouse

What to expect that spooky night

- * Little John the Clown providing entertainment
- * Ghoulish treats
- * Costume parade
- * Halloween crafts.

Bring a pumpkin for the Pumpkin Carving Contest.

Volunteers are needed to do baking. Students: this is a great way to pick up a few community hours.

Please contact Gillian Peters at 613-724-4707 or email hoover@primus.ca to learn more or to volunteer.

A MESSAGE FOR YOUNG PEOPLE

It is very easy to be blasé about your right to vote and to take a devil-may-care attitude, but you shouldn't brush this great honour off so quickly.

Why is voting worth the effort?

Sure, registering can be a bit of a chore, and yes, you have to head down to a polling station on voting day...but these are very small prices to pay for the right to vote.

When you live in a democracy you have the right to have a voice in government. In some countries people are literally dying to be able to cast a ballot and make

a difference. As if dying to vote doesn't say it all, here are five more reasons that every eligible young person should get out and vote.

1) The youth vote is often underestimated

Yes, it is true: public relations efforts traditionally overlook the youth market. Why? Because the sad reality is that election year after election year the percentage of eligible youth who actually register and vote is small when compared with other demographics.

This doesn't mean the youth market isn't a force; it just means that it isn't a main motivator in the drafting of campaign platforms and pre-election advertising. So, like any self-respecting rebellious young person, the natural thing to do is go against the grain and do the unexpected. Keep them on their toes, shock them into the 21st century, and get out and vote!

2) The hottest issues are also youth issues

Think about the future and the world you will one day inherit...with environmental concerns, fossil fuel consumption...the list just gets longer.

Add any issues that are near and dear to your heart on a personal level and the list becomes a little overwhelming. If you don't vote you effectively kiss off your ability to have any influence as to how these issues play out in your world. That's just lame!

3) Democracy only works when you work it

This one is an oldie, but hey, let's face it, it's also a goody. A government by the people, for the people just can't work without the people. This is a simple fact. Like a car without an engine, or a computer without a hard

...continued on page 2

CHAMPLAIN SPEAKER

OCTOBER 2010

CHAMPLAIN PARK COMMUNITY ASSOCIATION

Co-chairs: Lynne Bankier (729-0955)
and Heather Pearl (725-1422)

Vice-chair: Jonathan Chaplan
(728-7670)

Secretary: Alexi Campbell
(792-3829)

Treasurer: David Bartlett (301-9660)

Fieldhouse co-ordinator:
Laurie Fagan (728-1945)

Neighbourhood Watch:
Michael Cheng (722-3344)
Patrick Mates (722-4120)

Spring cleanup coordinators:
Ian Reid and Andrea Murphy (715-9504)

Planning: Amy Kempster (722-6039)

Other roles:

Membership: Craig Wells (725-5488)

Banking: potter (728-4980)

CHAMPLAIN SPEAKER - YOUR COMMUNITY NEWSLETTER

Editing and layout: Debra Huron 722-8048
dhuron@sympatico.ca

Proofreading: Andrea Murphy

Delivery Chief: Kelly Egan

On-line edition: To receive
an e-mail once a month
with a PDF of the
Speaker, contact
Alexander Smith at:
agmsmith@ncf.ca



Carriers: Kay Young, Terri Blanchard,
Sandy Milne, Philip Cutfield, Patrick Mates,
Rita Palin, Laura Robin, Becky Rynor, Jim
Hay, Wendy Huculak, Heather Pearl, Ann
Potter, Emma Morris, Linda Steele, Nancy
Leigh-Smith, Benjamin Holland, Marlene
Kells, Kelly Egan.

COVER PHOTO: Barb Robertson

The *Speaker* is produced on a regular
basis with the generous support of the
Ottawa Citizen.

drive, a democracy without voters is just a shell.

4) Don't vote, don't complain

If you don't vote you really have no right to complain about government decisions that you don't like no matter how much they actually suck. If there is one thing that is really annoying to actual voters, it is the endless ramblings on the bad political policy of a current government spewing from the mouths of eligible voters who never bothered to cast a ballot.

If you're like most young people you like complaining and have it down to a fine art. Want the right to complain when the powers that be make a truly heinous decision? Then you must exercise your right to vote.

5) Vote because you can

Voting is a tremendous gift. Young people just like you in other countries actually fight and even die for this right, a right that so many youth in democratic nations take for granted. Enough said!

From: <http://teenadvice.about.com> (edited by Debra Huron)

OCTOBER 25 VOTING LOCATION

The polling station for the municipal election to be held Monday, October 25 is St. George School on Keyworth Avenue.

TEENS AVAILABLE FOR BABYSITTING

Emma J. -----	728-6681
Berlin-----	722-2248
Leigh -----	715-9473
Anastasia -----	728-9014
Emma M. -----	728-4642
Alexandra -----	722-7482
Ben -----	729-1218
Emma I. -----	728-1063
Fiona -----	761-9262
Elisabeth (bilingual) -----	722-0454
Hanna L. (bilingual)-----	792-1891

Babysitting, house cleaning and light yard work: call Will at 728-1945.

UPDATES FROM YOUR COMMUNITY ASSOCIATION

61 Clearview Avenue development update

The proposal to demolish an existing small single-family home and to replace it with a semi-detached dwelling on an 85 x 55 foot lot was heard at the Committee of Adjustment on September 1. Variances for lot width and area were requested.

Lynne Bankier and Heather Pearl (representing the position of the Champlain Park Community Association's (CPCA) executive) and one of the neighbours (representing some of the closest neighbours) presented at the meeting in opposition to the proposal. A major concern is that the proposed front is dominated by two driveways and two stairways that go to the sidewalk, with no space for a front lawn or garden (only a modest seasonal planter box). The Committee ruled against the proposal, citing a number of concerns and concluding that it represented over-development of the site. The developer (Kenwood Homes) has appealed the decision to the Ontario Municipal Board.

171 Carleton Avenue development update

As previously reported, this development for two semi-detached dwellings on a 100 x 100 foot lot was approved last spring despite opposition from the CPCA and the neighbours. Both groups felt it was out of character for that site. The CPCA negotiated an agreement with the developer to maximize green landscaping to help mitigate the effects of the increased density. Heather and Lynne met recently with the landscape architect to examine the draft landscape plans and have given some feedback. Construction on the site has begun.

CPCA Annual General Meeting /All Candidates Meeting, September 30

A brief business meeting was held (election, financial report, development update), followed by an all candidates debate moderated by Laurie Fagan. All three candidates standing for election in Kitchissippi Ward participated. Westboro Beach Community Association co-hosted the all candidates portion, which was well-attended.

The full minutes, (including a table documenting the questions asked and each candidate's answers) will be sent out via the Champlain Park listserv before the election. If you are not already part of the listserv, you can join by e-mailing Alex Smith at agmsmith@ncf.ca.
 -Lynne Bankier

HOLIDAY CRAFT SHOW AT FIELDHOUSE

This will be the only notice for the 3rd Annual Craft Show.

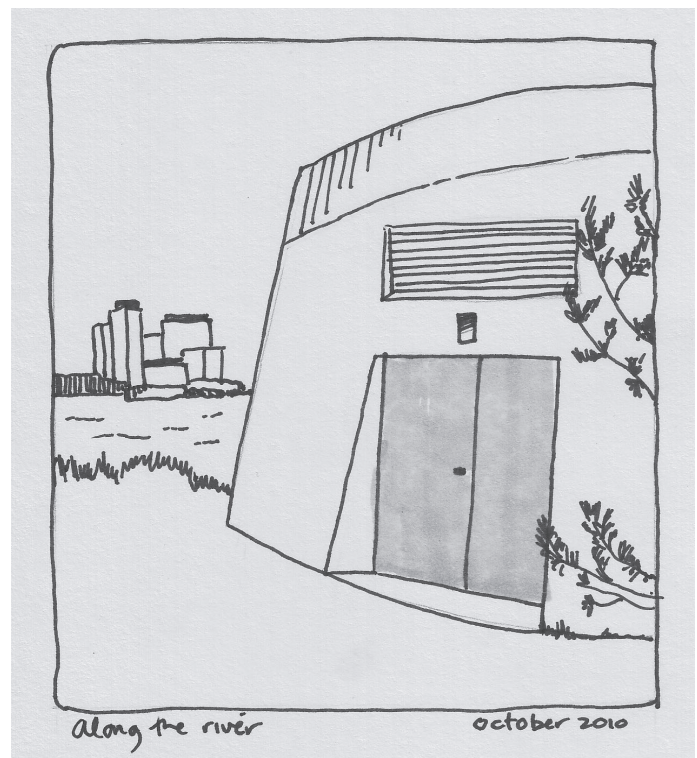
Mark your calendars for this year's Champlain Park Christmas Craft Fair, which will be held on **Saturday, November 27 from 1 to 5 p.m.** at the Champlain Park fieldhouse (149 Cowley Avenue).

This is a great opportunity to get your Christmas shopping done in one convenient location! We have a terrific variety of hand-made goods to offer, including locally made jewellery, Christmas ornaments, knitting, home-made baking, jams and jellies, hand-made soaps and lotions, dichroic glass, Christmas cards, Riverglen honey, and more.

For a complete list of vendors and to get a preview of what will be available, please check out the Champlain Park Christmas Craft Fair blog at: <http://champlainparkxmasfair.blogspot.com/>.

See you there! -Sarah Baird-McNeill

A LOCAL SCENE



Can you identify the purpose of this structure along the bike path adjacent to the Ottawa River?

-Original drawing by Andrea Murphy

AMY'S CORNER



BY AMY KEMPSTER
722-6039

Provincial Policy Statements:

Several weeks ago I attended a session on the Review of the 2005 Provincial Policy Statements. When making decisions on land use planning and development matters, municipalities and the Ontario Municipal Board are required to be consistent with these statements. Because of interest in our community on the topic of intensification, I will quote some passages from the policies for you as follows:

"1.1.3.3. Planning authorities shall identify and promote opportunities for intensification and redevelopment where this can be accommodated taking into account existing building stock or areas, including brownfield sites, and the availability of suitable existing or planned infrastructure and public service facilities required to accommodate projected needs. Intensification and redevelopment shall be directed in accordance with the Policies of Section 2 -Wise Use and Management of Resources and Section 3 -Protecting Public Health and Safety."

[Note that Section 2 includes Natural Heritage, Water, Minerals and Petroleum, Mineral Aggregate Resources and Cultural Heritage and Archaeology.]

"1.1.3.4. Appropriate development standards should be promoted which facilitate intensification, redevelopment and compact form, while maintaining appropriate levels of public health and safety."

The definitions section includes this: "Intensification: means the development of a property, site or area at a higher density than currently exists through: a) redevelopment, including the reuse of brownfield sites; b) the development of vacant and/or underutilized lots within previously developed areas; c) infill development; and, d) the expansion or conversion of existing buildings."

The review period extends until October 29. Questions suggested for the review include "Are there policies that need clarification or refinement?"

If you have suggestions or comments on the intensification policies cited above, this is your chance to suggest changes.

- E-mail PPSreview@ontario.ca,
- Fax 416-585-5870 (the Ministry of Municipal Affairs and Housing), or
- Fill out the comment form at <http://www.mah.gov.on.ca/Page7244.aspx>

Full text of the Provincial Policy Statements can be found at Ministry of Municipalities and Housing's website or at <http://www.gov.on.ca/MBS/english/publications/>.

If you wish to consult a printed copy you can probably borrow one from the library or borrow mine by calling 613-722-6039.

Trade show facility at the airport:

Fallout from the Lansdowne Park decision has resulted in the city contributing \$700,000 to the design, planning, and site preparation work required for the proposed new Exposition Hall near the airport.

The developer group proposing the changes at Lansdowne ignored Council's requirement to include show space, so if the Lansdowne project is to go forward the provision of new show space has a deadline.

Unfortunately, for those who care about the environment and the Greenbelt, the location is on Greenbelt land leased to the airport. This land is wooded, is likely to be considered part of a nearby wetland, is the source of Sawmill Creek, and is probably home to threatened species, some of which have been sighted nearby.

The Shenkman Group of Companies is developing this facility through a sub-lease from the airport authority. This whole thing has been rushed through the planning process. Personally, I am very unhappy that some of my taxes are being used to clear-cut a wooded area for a facility that, due to its location, will not be a satisfactory replacement for the Lansdowne Park show space.