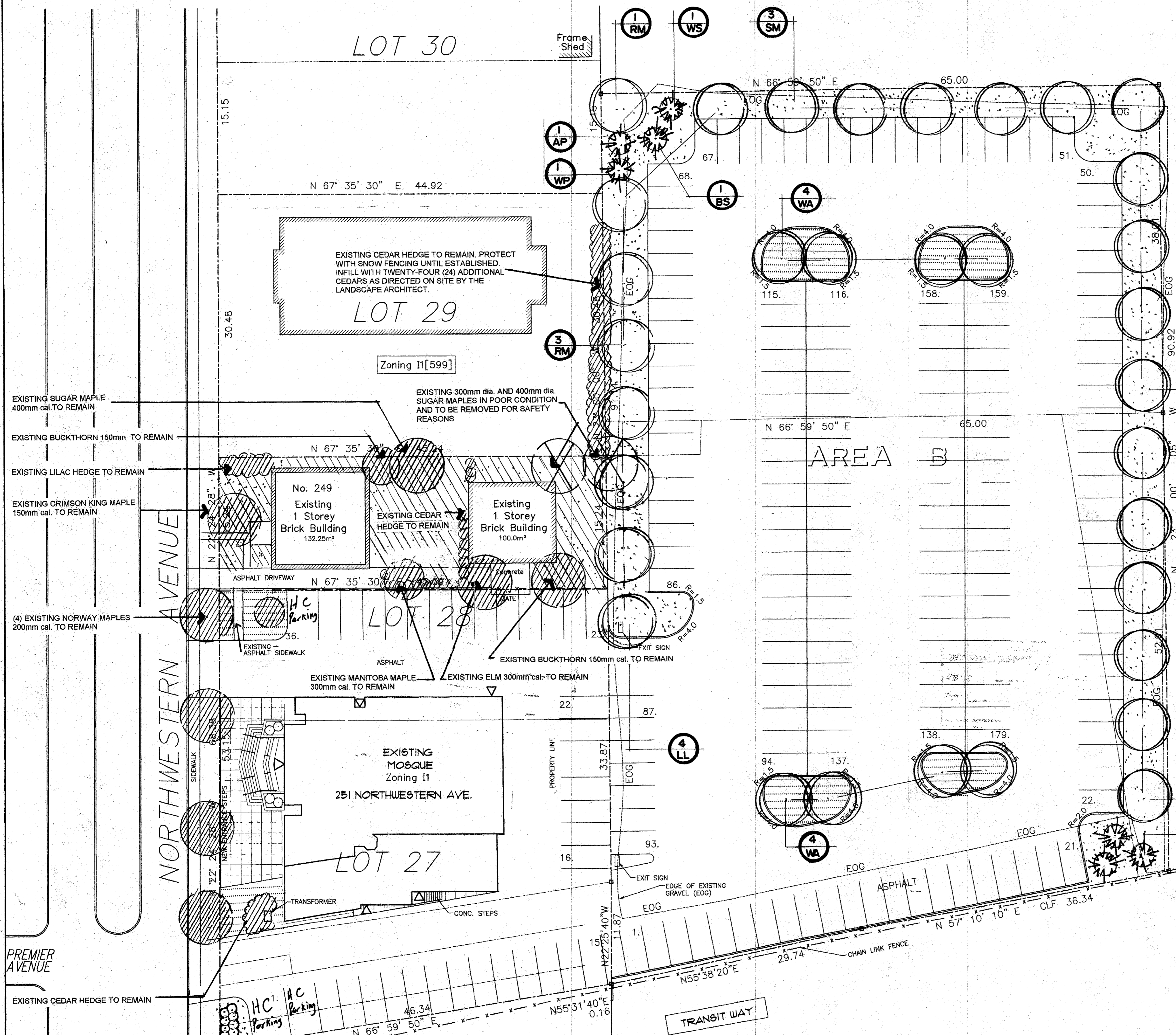


**GENERAL NOTES**

1. It is the responsibility of the contractor to report any errors, omissions or discrepancies in this plan with actual site conditions to the Landscape Architect before proceeding with construction.
2. The contractor is to notify all utility companies and authorities prior to any excavation and ascertain locations of underground services.
3. The contractor is to reinstate all areas and items damaged as a result of construction activities.
4. The contractor is to comply with all pertinent codes and by-laws.
5. The contractor is to maintain a positive surface run-off throughout the entire construction period.
6. The Landscape Architect is not responsible for subsurface conditions.
7. The contractor is to identify all existing trees to remain on site with the Landscape Architect prior to construction.
8. The contractor is to stake the proposed location of all plant material in conjunction with the Landscape Architect prior to excavation.
9. All rear yard areas and rear decks and projections added may be altered or landscaped at owner's discretion from that that is shown on plans providing there is conformance with zoning by-laws.



**LEGEND**

- EXISTING TREES TO REMAIN
- EXISTING TREES TO BE REMOVED
- PROPOSED TREES, SHRUBS AND GROUND COVERS
- PROPOSED SOODED GRASS AREA
- PROPOSED SEEDED GRASS AREAS
- EXISTING SEEDED GRASS AREAS

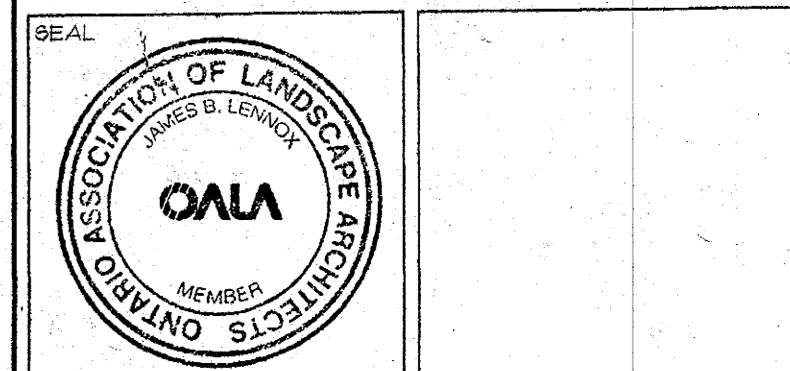
APPROVED  REFUSED   
 GRANT K. LINDSAY  
 Manager  
 Development Approvals  
 DATE December 13, 2007

City of Ottawa  
 Planning and Infrastructure Approvals  
 NOV 05 2007  
 RECEIVED

**PLANT LIST**

Key	Botanical Name	Common Name	Size	Condition
AP	Pinus nigra	Austrian Pine	1800mm ht.	B&B
BS	Picea pungens "Glaucia"	Colorado Blue Spruce	1800mm ht.	B&B
DW	Rhus typhina "Lacinolata"	Cutleaf Staghorn Sumac	600mm ht.	BR/Potted
LL	Tilia americana "Redman"	Redman Linden	70mm cal.	B&B
RM	Acer rubrum	Sugar Maple	60mm cal.	B&B
SM	Acer saccharum	Skyline Honeylocust	60mm cal.	B&B
WA	Gleditsia triacanthos "Skyline"	Skyline Honeylocust	60mm cal.	B&B
WC	Thuja occidentalis	Hedge Cedars	1200mm ht.	BR
WP	Pinus sylvestris	White Pine	1800mm ht.	B&B
WS	Picea glauca	White Spruce	1800mm ht.	Potted

No.	DATE	DESCRIPTION	INIT.
6.	5/09/07	REV. FOR SITE PLAN APPROVAL	JL
5.	20/04/07	ISSUED FOR SITE PLAN APR.	JL
4.	15/04/07	FOR CLIENT REVIEW	JL
3.	28/03/07	FOR REVIEW	SM
2.	22/01/07	FOR REVIEW	SM
1.	24/12/06	FOR REVIEW	SM



PROJECT: 251 NORTHWESTERN AVE  
 NEW PARKING AREA  
 OTTAWA MOSQUE  
 OTTAWA, ON.

CLIENT: OTTAWA MUSLIM ASSOCIATION

DRAWING TITLE: LANDSCAPE PLAN

DATE: DEC. 2006	SCALE: 1:250	SHEET No:
DRAWN BY: SBT	CHECKED:	L-1

D07-12-07-0102